



# **The Board of Education Early Childhood Committee**

January 14, 2020

# Agenda

- Welcome
- Presentation
- Q&A
- Public Participation
- Closing Remarks



# Mayor's Office of Early Childhood Education

## **Education & Human Services Team Mission:**

To craft policies, build systems and partnerships, and maximize public resources in support of the well-being of Chicagoans with an unwavering commitment to equitable outcomes for children, youth families, and those who are underserved.



# Visioning: Future of Chicago Early Learning

We believe that organizing ourselves as a city around a clear, ambitious, child and family centered vision for early care and learning will help us keep our youngest and least resourced citizens at the center as we embark upon this essential work together.

This administration is committed to doing that work in partnership with you, with equity and excellence at the core, and through inclusive and transparent processes.





# Visioning: Future of Chicago Early Learning

What would a bold, ambitious vision for the future of Chicago Early Learning look like?





# Chicago Early Learning

- Services for children prenatal through age five and their families.
- A unified, intentional system guided by Chicago Public Schools, Department of Family and Support Services, and the Mayor's Office (and other city agencies)
- A system that provides high-quality supports and services to children and families in a variety of settings, including schools, community-based organizations.
- Prioritizing the least-resourced children and families.
- To ensure readiness for both kindergarten and for lifelong learning.





# Prenatal to Five

Chicago has a variety of initiatives for young children and families. A few of these include:

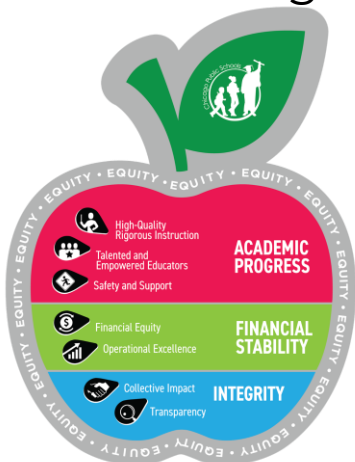
- Family Connects
- Preschool and Child Care in schools and community based settings
- Chicago Early Learning Workforce Scholarship
- Universal Pre-K for Four-Year-Olds



# Mission Alignment

Our mission as a District is to provide a high quality public education for every child, in every neighborhood, that prepares each for success in college, career and civic life.

*Providing early access to education is essential to the District's ability to achieve that mission.*





# Core Values

At CPS, our fundamental beliefs that guide our actions are:



## Student Centered

We place students at the center of everything we do.



## Whole Child

We support our students so they are healthy, safe, engaged, and academically challenged.



## Equity

We eliminate barriers to success and ensure equitable opportunities for all students.



## Academic Excellence

We provide diverse curriculum and programs with high academic standards to prepare students for future success.



## Community Partnership

We rely on families and communities in every neighborhood to support our shared mission.



## Continuous Learning

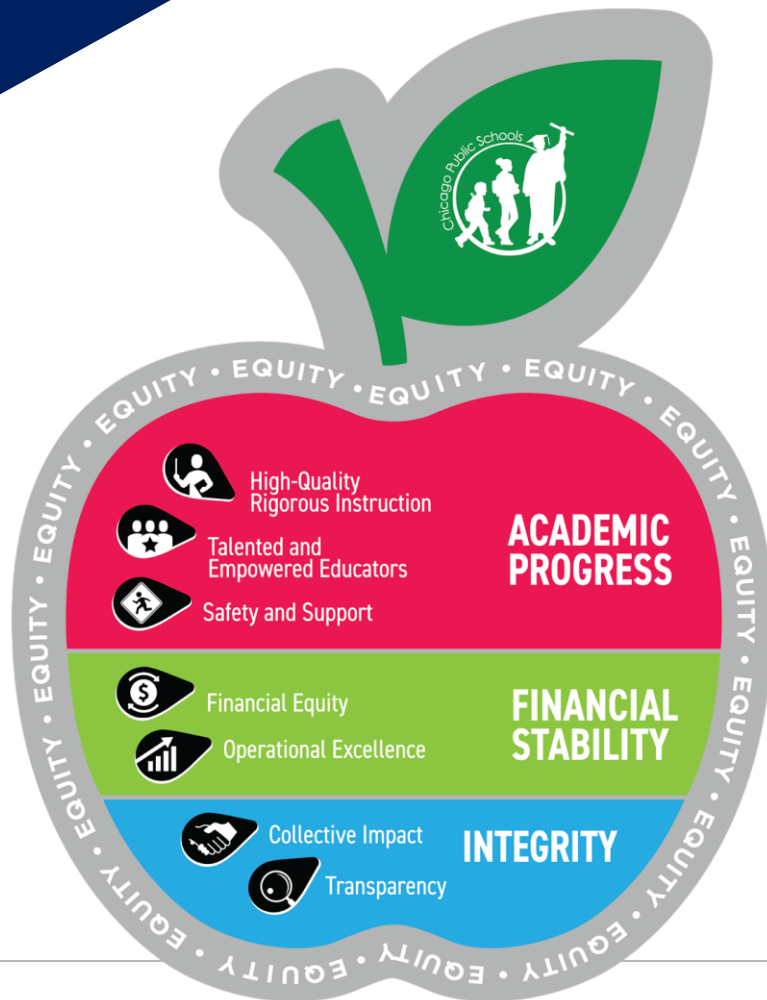
We promote an environment of continuous learning throughout CPS for students, teachers, leaders and district staff.

# Commitments

## We fulfill our vision through these Commitments:

### Academic Progress

A high-quality education develops in young people not only strong academic skills, but a love of learning and the ability to work with others, take initiative, solve problems creatively, live healthy lives, and become active citizens in their communities. We will design instruction and learning environments that provide for individual needs and help prepare all of our students for a successful adulthood.



### Financial Stability

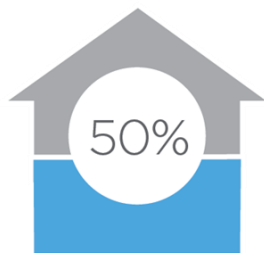
Fulfilling our promise to provide a high-quality education requires that we remain on sound financial footing and serve as good stewards of public and philanthropic funds. We must also advocate with the wider Chicago community for fair school funding from the state so all of Chicago's children receive the educational resources they need and deserve.

### Integrity

We respect our students and families, and the diverse communities in which they live, and honor them as partners in our shared mission. We will earn their trust by communicating openly and acting on community feedback.

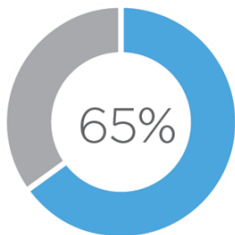
# FIVE-YEAR VISION 2019-2024

## Five-Year Goals

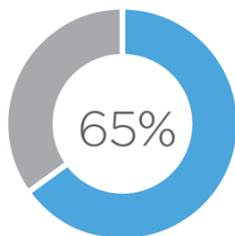


Increase in the number of incoming kindergarteners meeting benchmarks across all developmental domains.

### EARLY CHILDHOOD

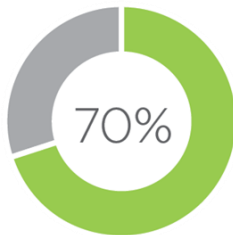


2nd grade students will be at or above national attainment for reading.

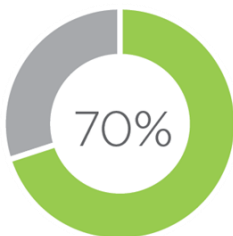


2nd grade students will be at or above national attainment for math.

### ELEMENTARY SCHOOL

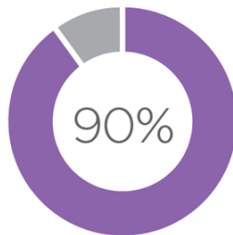


Students will be at or above national attainment for reading.

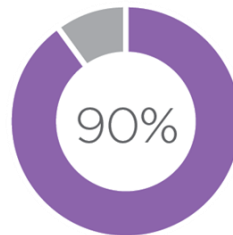


Students will be at or above national attainment for math.

### HIGH SCHOOL



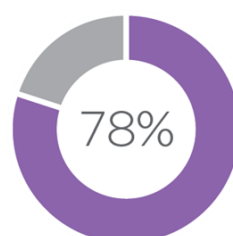
Freshmen will be on track to graduate high school.



Students will graduate high school within five years.



Students will meet college readiness benchmarks on the SAT.



Graduates will enroll in college.



# Pre-K Landscape

## Schools



**12,500** Full Day Seats  
**3,500** Half Day Seats  
**336 Schools**

## Child Parent Centers



**1,300** Full Day Seats  
**500** Half Day Seats  
**19 Child Parent Centers**

## Early Learning Centers



**300** Full Day Seats  
**500** Half Day Seats  
**8 Early Learning Centers**



# Pre-K Program Services and Supports

## Pre-K Program

### ECS

**Early Childhood Specialist  
(Instruction)**

- 15 Specialists
- Provide direct school support in instructional quality
- Focus on Balanced Literacy and Developmentally Appropriate Practice

### CSC

**Comprehensive Services  
Coordinator  
(Health)**

- 10 Coordinators
- Provide direct school support on building systems to support comprehensive services.

### FEC

**Family Engagement  
Coordinator  
(Family Engagement)**

- 10 Coordinators
- Provide direct school support on building systems to support family engagement.



# Early Childhood SY20 Priorities

## Preschool Access and Expansion

- Universal Preschool Expansion
- Application enhancements
- Aligned enrollment policies

## Strategic Partnerships

- Family engagement
- Community partnerships

## High Quality Programming

- Professional Development
- Instruction and Coaching
- P-2 Instructional Alignment



# Where we are now: our progress and focus

## Progress

- ✓ Increased access to full-day PK by over 24% over SY19-20
- ✓ Identified expansion opportunities
- ✓ Launched initiatives with CBOs around workforce, professional development, and enrollment
- ✓ Created a tiered support model for comprehensive services and supports

## Collaboration Model

- Assessing the future of our technology / application system
- Evaluating preschool enrollment policies
- Establishing workgroups and community engagement sessions around UPK



**Q & A**



# Questions

- What would a bold, ambitious vision for the future of early childhood in Chicago look like?
- How can we better engage you as partners?
- What is the greatest barrier that prevents you from accessing high-quality ECE programming?
- What impact does this information have on your understanding of preschool options within the City of Chicago?
- What additional information would you like to know regarding early learning within the city?
- Would you encourage someone to enroll in preschool? Why or why not?

# Closing Remarks

- Please complete your question sheets and submit them at the registration table
- If you would like to submit written comments, we can collect them tonight or please send them via email at [BOEECC@cps.edu](mailto:BOEECC@cps.edu) or to the Board Office at 1 N. Dearborn, Suite 950.
- Written comments will be accepted until 5:00 p.m., January 15, 2020.